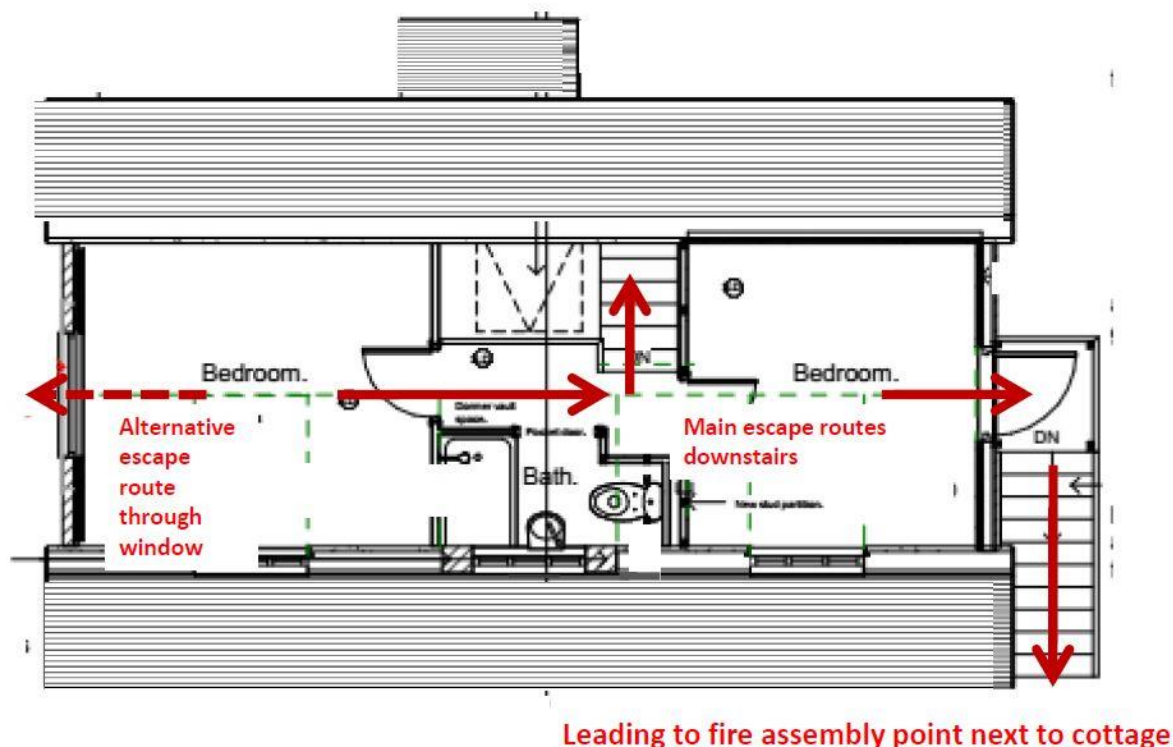


Ground Floor Escape Route

First Floor Escape Route



Please familiarise yourself with the floor plan of the building and the designated fire escapes

FIRE PROCEDURE AND POLICY

PREVENTION

This is a **No Smoking building**. If you wish to smoke please smoke in the garden and use the flower pot ashtray. Please do not discard smoking material anywhere other than the ashtray.

No candles, naked flames or portable heaters are allowed. A firelighter with a safety catch is provided in the kindling bucket. Firelighters are provided in the tin in this bucket.

Do not place logs stacked up against the sides of log burner – place in the store provided underneath the log burner.

We request that guests do not use their own electrical appliances, trailing leads or adapters. Where these are used please make sure they are in good working order and unplug after use. A heat mat is provided for use of hair straighteners/ tongues.

EV charging is a fire risk and is not allowed our electrical set up cannot accommodate this.

Given the open plan layout of the lodge you are advised in your own interests to turn the oven/hob off at the wall, turn kettle and toaster off at the wall and close the vents down on the log burner before retiring for bed to minimise risk of a fire.

IN THE EVENT OF A FIRE

The heat the smoke and heat detectors will trigger the alarm. A fire blanket is provided for small kitchen fires.

Please use the nearest fire exit – front door if downstairs and fire exit in bedroom 2 upstairs. For emergencies during the night pre-charged Emergency torches are provided in the bedrooms and sitting room and the exterior emergency light over the outside stairs will also come on in the event of a fire or power cut. A plan showing the location of exits and emergency torches is provided. Please **do not remove** the emergency torches from their designated locations other than during an emergency or loss of power.

The fire assembly point is by the front door of the main house. Call 999 and **ring the house bell to raise the alarm.** Call 07980 542986 to inform the owners of the emergency. In the event of not having a mobile signal please raise the alarm with the nearest neighbours. Do not re-enter the building and await the arrival of the fire service.

Address: Bicton Lodge, 3 Bicton. Clun, Craven Arms, SY7 8NF What three words: window. awoke. fond

FIRE FIGHTING EQUIPMENT. Do not put yourself at risk if tackling a fire.

Please do not use the fire extinguishers unless you have had training in using a fire extinguisher and the fire is small and you feel comfortable about tackling it

Fire extinguishers are available on the landing (**water extinguisher for general fires**) and in kitchen area (Co2 extinguisher for electric fires). In the event of **electric fires** – the electricity should be switched off at the fuse board in the wall cupboard behind the TV prior to using the CO2 extinguisher.